

IPCopper™ ITR1000

Network Packet Capture Appliance



IPCopper™ ITR1000

The ITR1000 provides a capture rate of up to 1Gbps, onboard storage of 1TB, dual 20Kbit encryption and a powerful cloud-based graphical user interface for data review and analysis. Stealthy operation hides IPCopper's presence from electronic snoopers.

Peak Capture Rate:
1 Gbps

Min. Sustained Capture Rate:
150 Mbps

Memory Capacity:
1 Terabyte

Network Interface:
2 Ethernet Ports

Processor:
Intel Dual Core

Supported Protocols:
TCP/IP, UDP, ARP and others that use underlying Ethernet or Ethernet framing as transport

IPCopper™ ITR1000

The IPCopper ITR1000 delivers complete and continuous 24/7/365 network and internet surveillance, providing reliable packet capture and netflow monitoring capabilities. With IPCopper, organizations can better understand and assess their network usage and needs, as well as recognize and manage threats to their data and network structure.

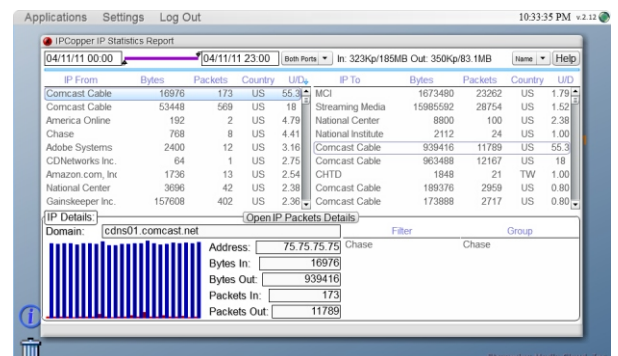
Benefits and Uses of IPCopper™ Packet Capture Appliances

- Detect intrusions, unauthorized access and other threats to your data.
- Gather detailed and comprehensive evidence to prevent cyber-attacks, corporate espionage and internal misuse.
- Reduce incident response time to suspicious and abnormal network events. Conduct effective and efficient network forensics based on accurate, comprehensive data.
- See all data traveling in and out of your network and prevent false positives. No more guessing whether or not data was accessed, stolen or compromised.
- Record and access recent and historical IP activity.
- Demonstrate compliance with network security regulations related to HIPAA, SOX, PCI and other.

Gather information to help IT personnel in better detecting and preventing intrusions, bolstering network security and data integrity. Identify network problems and benchmark servers.

- Create carbon copies of emails, IM chats and other IP-based communications.
- Stealthily record the internet activities of specific employees or workgroups.

Deploy IPCopper packet capture appliances anywhere on your network, either at the perimeter to monitor all traffic in and out of your network or between core nodes and the rest of your network to monitor crucial, select equipment. IPCopper records all Ethernet-based communications that pass through, including packet headers and payloads, giving you the information required to protect against advanced threats and run-of-the-mill hack attacks. A graphical user interface with intuitive graphs displays the in/out ratios for IP addresses visually, making it easy to browse through and pick out anomalies. With its combination of gigabit capture speeds, large memory capacity, autonomous operation and cloud-based data retrieval and analysis, the ITR1000 is a complete, easy-to-install tool for comprehensive network surveillance and monitoring.



IPCopper IP Statistics Report

Comprehensive Packet Capture and Review

The IPCopper ITR1000 network packet capture appliance features a peak capture rate of 1Gbps, 1 TB of memory and two RJ-45 gigabit network interfaces for packet capture and data retrieval. IPCopper ITRs “plug-and-play” into any Ethernet network, connecting inline on any Cat-5 cable or via a mirror/span port or a network tap. No user intervention is required; once installed and powered up, the units boot and begin operating autonomously, capturing and recording all network activity, including web browsing, IM chats, FTP sessions, emails and all other Ethernet-based transmissions, communications or commands.

IPCopper ITR appliances allow users to review network traffic and investigate suspicious IP activity through the included cloud-based graphical user interface. Users can “drill down” through IP and non-IP packets reports to browse the recorded traffic easily and efficiently.

The IPDump utility exports captured data into PCAP formatted files for backup or analysis with PCAP-capable utilities such as Wireshark, tcpdump, Snort, ngrep, Nmap and McAfee threat detection products. An API allows software developers to create custom data analysis and threat detection tools.

No Electronic Footprint, Dual Data Encryption

Stealthy operation hides IPCopper’s presence from electronic snoopers. The ITR1000 does not announce itself on the network or require an IP address, making its presence on your network invisible to hackers and other remote observers. The device stealthily records the IP packets that pass through without altering the netflow or affecting network speed in any detectable fashion.

Your recorded data is further protected by dual encryption with a 20 Kilobit key. The ITR1000 encrypts the recorded data and “mates” it to the hard drive, protecting you in the event someone gains physical access to it and duplicates your data. Illicit copies of the data would not be retrievable because it would not match the hard drive on which it was initially recorded.

ITR1000 Specifications

Capture Rate

1 Gbps (peak); 150 Mbps (minimum sustained)

Data Storage

1 Terabyte

Data Encryption

20 Kbit removable key

Network Adapters

2xRJ-45 Gigabit Ethernet ports

Rack Mountable?

No, for a rack-mountable model see the ITR3000

Dimensions

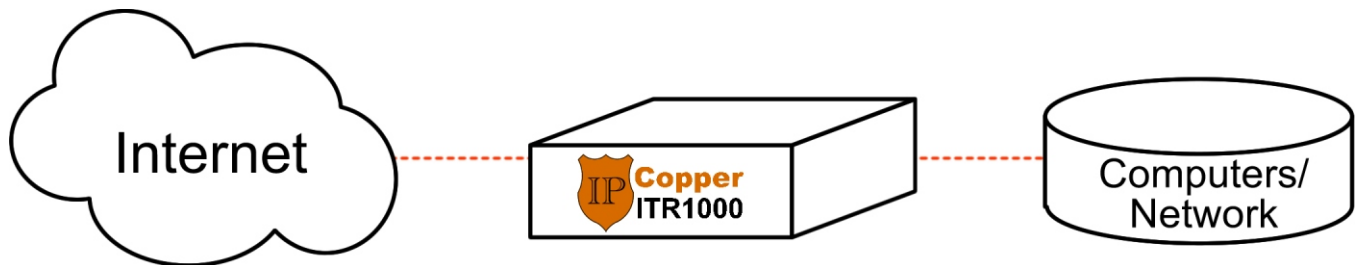
10.5” (W) x 13.5” (D) x 4” (H)

Weight

8 lbs

We also specialize in customized software and hardware solutions. Please contact us for more details.

Sample Network Configuration



Contact Us for More Information

IPCopper™ is designed and manufactured in the USA by IPCopper, Inc. For more information on IPCopper packet capture appliances, visit us online at www.ipcopper.com or call us at 855-347-8074. Sales email: sales@ipcopper.com.

IPCopper, Inc.

707 SW Washington St #1410 • Portland, Oregon 97205
855-347-8074 (toll free)
503-290-0110 (tel) • 503-290-0111 (fax)
Email: sales@ipcopper.com
Web: www.ipcopper.com



© 2012 IPCopper, Inc. All rights reserved. IPCopper and IPCopper ITR1000 are trademarks of IPCopper, Inc. All other company names, brand names and product names are the property and/or trademarks of their respective companies.